



2441 76th Ave. SE., #100, Mercer Island, WA 98040

MUDBAY



NATIONAL SIGN
CORPORATION

1541 S. 92nd Place, #B, Seattle, WA 98108
P: 206-282-0700
www.nationalsigncorp.com

This is an original unpublished drawing, created by National Sign Corporation. It is submitted for your personal use in connection with a project being planned for you by National Sign Corporation. It is not to be shown to anyone outside your organization, or to be used, reproduced, copied or exhibited in any fashion. Any usage beyond that granted to buyer herein shall require the separate payment of a design and engineering fee to National Sign Corporation.

MUDBAY

SIGN TYPE 01

S/F WALL SIGN 35 5/8" x 12'-11"
Quantity: (1)

PAGE 05-06

SIGN TYPE 02

D/F PROJECTING BLADE SIGN 40" x 39"
Quantity: (1)

PAGE 07-08

SIGN TYPE 03

S/F WALL SIGN 5'-0" x 46 1/8"
Quantity: (1)

PAGE 09-10



Existing Conditions
Scale: NTS



1541 S. 92nd Place, #B, Seattle, WA 98108
P. 206.282.0700
www.nationalsigncorp.com

CLIENT INFORMATION:

MudBay Mercer Island
2441 76th Ave. SE., #100
Mercer Island, WA 98040

REPRESENTATIVE:

Steve Zamberlin

DESIGNER:

Mark Mahan

DATE:

02/16/22


REVISION:

1	
2	
3	
4	
5	
6	
7	
8	
9	

REVIEWED BY:

F	
C	
S	
P	

This is an original unpublished drawing, created by National Sign Corporation. It is not to be shown to anyone outside your organization, or to be used, reproduced, copied or exhibited in any fashion. Any usage beyond that granted to buyer herein shall require the separate payment of a design and engineering fee to National Sign Corporation.

 SIGN(S) TO BE MANUFACTURED TO U.L. SPECIFICATIONS AND WILL BEAR THE U.L. LABEL(S). INSTALL IN ACCORDANCE WITH NATIONAL ELECTRICAL CODES.

SCALE: As Noted

DESIGN NUMBER:
22-010 V4

JOB NUMBER:
XX



1541 S. 92nd Place, #B, Seattle, WA 98108
P. 206.282.0700
www.nationalsigncorp.com

CLIENT INFORMATION:

MudBay Mercer Island
2441 76th Ave. SE., #100
Mercer Island, WA 98040

REPRESENTATIVE:

Steve Zamberlin

DESIGNER:

Mark Mahan

DATE:

02/16/22

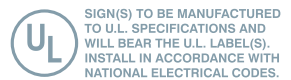
REVISION:

- 1 _____
- 2 _____
- 3 _____
- 4 _____
- 5 _____
- 6 _____
- 7 _____
- 8 _____
- 9 _____

REVIEWED BY:

- F _____
- C _____
- S _____
- P _____

This is an original unpublished drawing, created by National Sign Corporation. It is not to be shown to anyone outside your organization, or to be used, reproduced, copied or exhibited in any fashion. Any usage beyond that granted to buyer herein shall require the separate payment of a design and engineering fee to National Sign Corporation.



SCALE: As Noted




DESIGN NUMBER:

22-010 V4

JOB NUMBER:

XX



COLORS	PANTONE	PAINT	FINISH	VINYL	ACRYLIC
 White	N/A	Std White	Gloss	Trans. Digital	White Face
 Dark Blue	303c	Match PMS	Gloss	Trans. Digital	
 Burgundy	Burgundy	Match PMS	Gloss	Trans. Digital	



NATIONAL SIGN
CORPORATION

1541 S. 92nd Place, #B, Seattle, WA 98108
P. 206.282.0700
www.nationalsigncorp.com

CLIENT INFORMATION:

MudBay Mercer Island
2441 76th Ave. SE., #100
Mercer Island, WA 98040

REPRESENTATIVE:

Steve Zamberlin

DESIGNER:

Mark Mahan

DATE:

02/16/22


REVISION:

1	
2	
3	
4	
5	
6	
7	
8	
9	

REVIEWED BY:

F	
C	
S	
P	

This is an original unpublished drawing, created by National Sign Corporation. It is not to be shown to anyone outside your organization, or to be used, reproduced, copied or exhibited in any fashion. Any usage beyond that granted to buyer herein shall require the separate payment of a design and engineering fee to National Sign Corporation.

 SIGN(S) TO BE MANUFACTURED TO U.L. SPECIFICATIONS AND WILL BEAR THE U.L. LABEL(S). INSTALL IN ACCORDANCE WITH NATIONAL ELECTRICAL CODES.

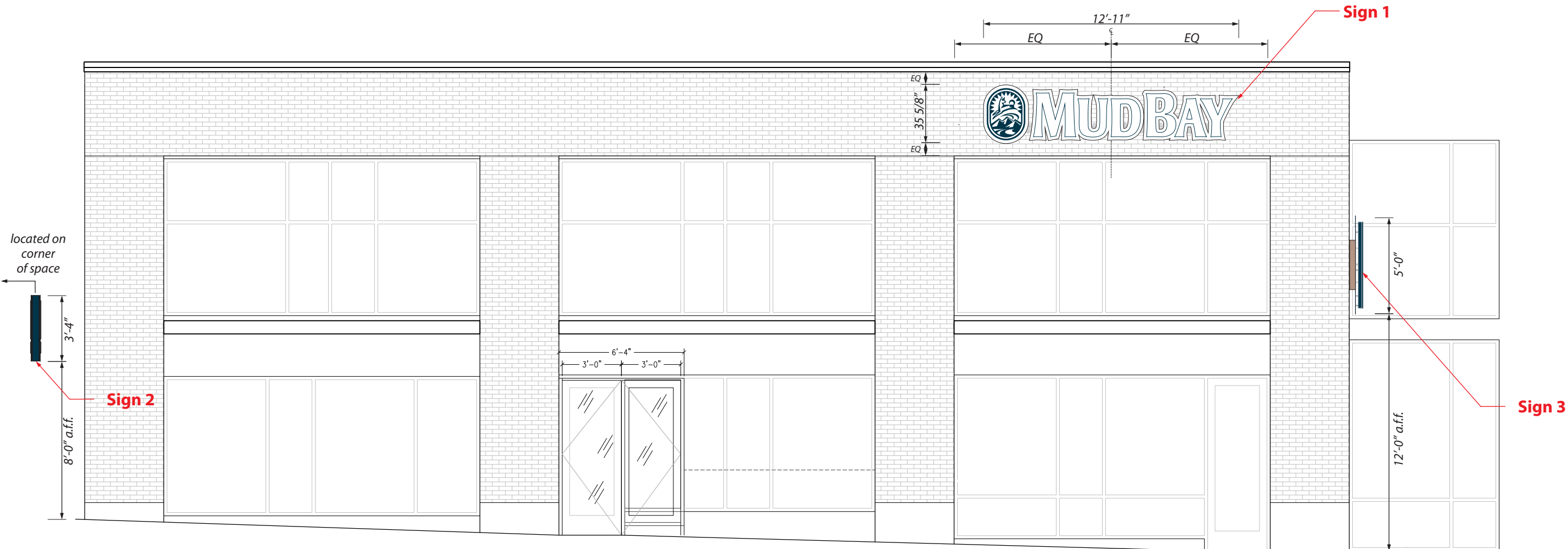
SCALE: As Noted

DESIGN NUMBER:

22-010 V4

JOB NUMBER:

XX



1 Storefront Partial East Elevation View
Scale: 3/16"=1'-0"

CLIENT INFORMATION:

MudBay Mercer Island
2441 76th Ave. SE., #100
Mercer Island, WA 98040

REPRESENTATIVE:

Steve Zamberlin

DESIGNER:

Mark Mahan

DATE:

02/16/22

REVISION:

1	
2	
3	
4	
5	
6	
7	
8	
9	

REVIEWED BY:

F	
C	
S	
P	

This is an original unpublished drawing, created by National Sign Corporation. It is not to be shown to anyone outside your organization, or to be used, reproduced, copied or exhibited in any fashion. Any usage beyond that granted to buyer herein shall require the separate payment of a design and engineering fee to National Sign Corporation.

SIGN(S) TO BE MANUFACTURED TO U.L. SPECIFICATIONS AND WILL BEAR THE U.L. LABEL(S). INSTALL IN ACCORDANCE WITH NATIONAL ELECTRICAL CODES.

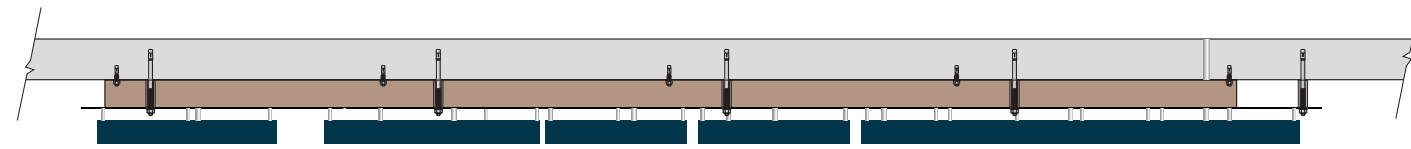
SCALE: As Noted

DESIGN NUMBER:

22-010 V4

JOB NUMBER:

XX

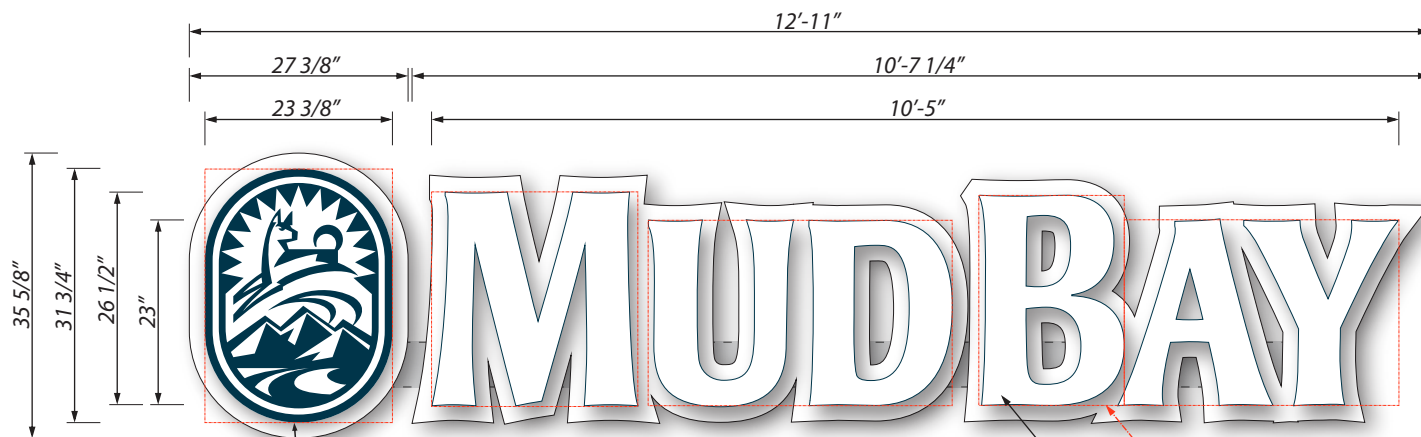


3 Plan View

Scale: 1/2"=1'-0"

Sign 1:

Manufacture and Install (1) Exterior Single faced illuminated front-lit / halo-lit pan channel logo and lettering sign.



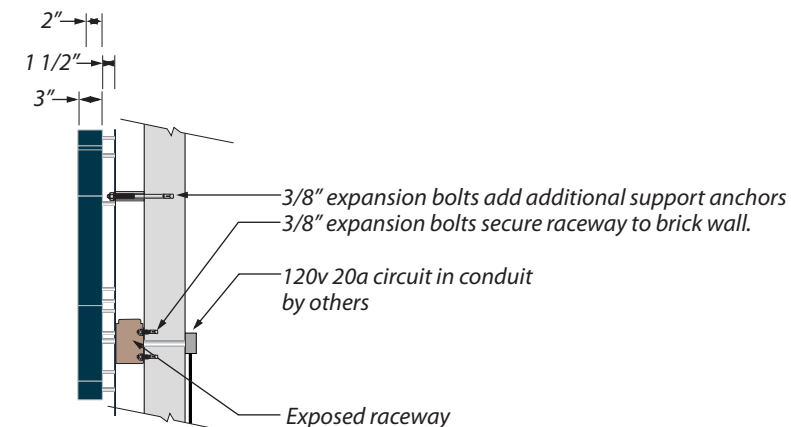
1 Front View- Detail

Scale: 1/2"=1'-0"

Logo to be Front lit halo lit reverse pan channel letter construction. Returns and fabricated retainer to be painted Navy Blue to match PMS 303c (gloss finish). Face to be translucent acrylic- White with first surface applied full color digital vinyl graphic. Letter back to be 3/8" polycarbonate- Clear with diffuser. Face lit and Halo illumination to be White Agile Pro 160's LED's- 6500k. Pin lettering off aluminum background 1 1/2" with all thread and pipe sleeves painted White (satin finish).

Total square feet of sign: 24.92 sq ft
Total allowable: 25sq ft

Lettering to be reverse pan channel letter construction
Returns to be painted Navy Blue to match PMS 303c (gloss finish).
Letter faces to be painted White (gloss finish). Letter backs to be 3/8" polycarbonate- Clear with diffuser.
Halo illumination to be White Agile Pro 160's LED's- 6500k
Halo splash background to be .100" aluminum painted White (satin finish).
Pin lettering off aluminum background 1 1/2" with all thread and pipe sleeves painted White (satin finish).
Mount aluminum raceway painted to match wall color, flush to wall with 1/4" toggle bolts through blocking by others.



2 Side View

Scale: 1/2"=1'-0"

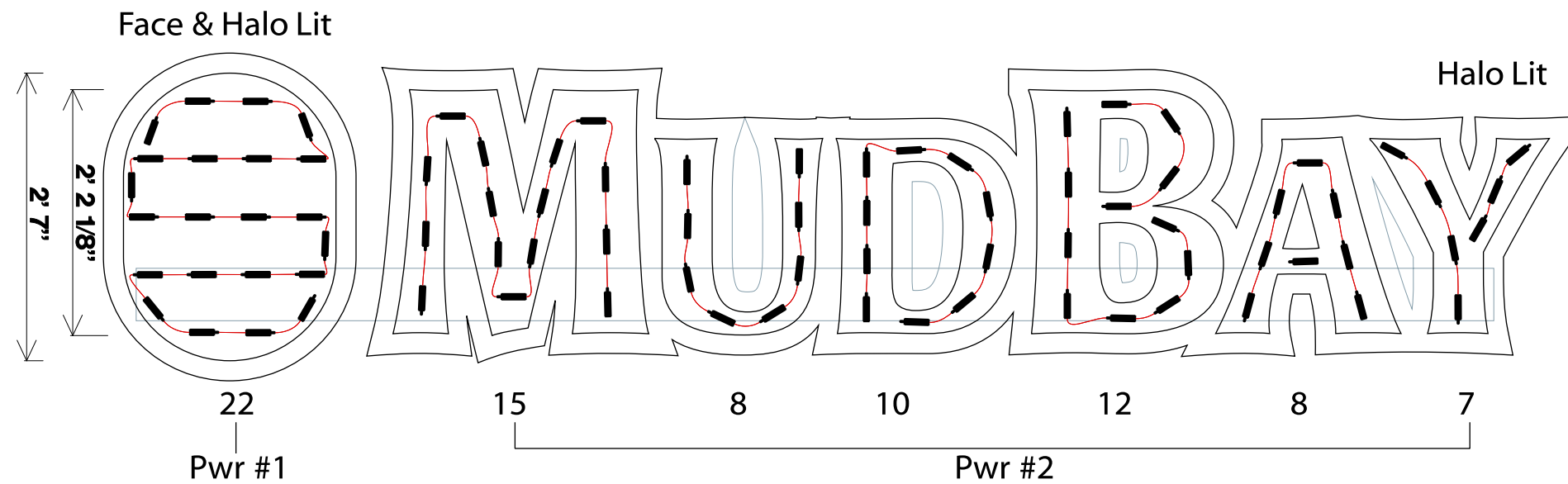


4 Night View

Scale: NTS



PRO 160 2B1C



ELECTRICAL INFORMATION:
TOTAL ELECTRICAL LOAD=1.14amps
 (1) Dedicated 20amp x 277volt x 60hz circuit
 Circuit to be provided by customer.

26.12" MudBay

Date 07 February 2022	Can Depth 3"	Modules per Foot 2	Total System Watts 75.25W
Email Layouts@genledbrands.com	Power Supply (2) PS12-60WSL-100-277V	Modules spacing 6" to 6.5"	Total LED Watts 63.96W
Module (82) LS-PRO160-65K-2B1C	Power Supply Location Raceway	Row Spacing 6.3"	Illumination Face & Halo Lit

- UNLESS OTHERWISE SPECIFIED:** All layouts are for a single face sign or a single set of letters and the depth of the application considered for the layout is 5 inches.
- LED module placement is approximate. AgiLight® recommends the sign manufacturer verify the LED placement and quantity to ensure even illumination and brightness expectations are achieved.
- Estimations are based off the quality of art work and information provided by the customer, this includes: font style, letter height, depth, face material, and any special instructions. Missing information may cause delays in the delivery of estimates, as well as effect product selection, accurate quantities, and brightness.
- For installation instructions of AgiLight® LED systems please refer to www.AgiLight.com under the RESOURCES section or contact an AgiLight® Inside Sales Representative at: +1.866.482.0203



1541 S. 92nd Place, #B, Seattle, WA 98108
 P. 206.282.0700
www.nationalsigncorp.com

CLIENT INFORMATION:

MudBay Mercer Island
 2441 76th Ave. SE., #100
 Mercer Island, WA 98040

REPRESENTATIVE:

Steve Zamberlin

DESIGNER:

Mark Mahan

DATE:

02/16/22

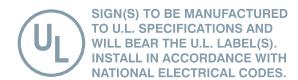
REVISION:

1	
2	
3	
4	
5	
6	
7	
8	
9	

REVIEWED BY:

F	
C	
S	
P	

This is an original unpublished drawing, created by National Sign Corporation. It is not to be shown to anyone outside your organization, or to be used, reproduced, copied or exhibited in any fashion. Any usage beyond that granted to buyer herein shall require the separate payment of a design and engineering fee to National Sign Corporation.



SCALE: As Noted

DESIGN NUMBER:

22-010 V4

JOB NUMBER:

XX



NATIONAL SIGN
CORPORATION

1541 S. 92nd Place, #B, Seattle, WA 98108
P: 206-282-0700
www.nationalsigncorp.com

CLIENT INFORMATION:

MudBay Mercer Island
2441 76th Ave. SE., #100
Mercer Island, WA 98040

REPRESENTATIVE:

Steve Zamberlin

DESIGNER:

Mark Mahan

DATE:

02/16/22


REVISION:

1	
2	
3	
4	
5	
6	
7	
8	
9	

REVIEWED BY:

F	
C	
S	
P	

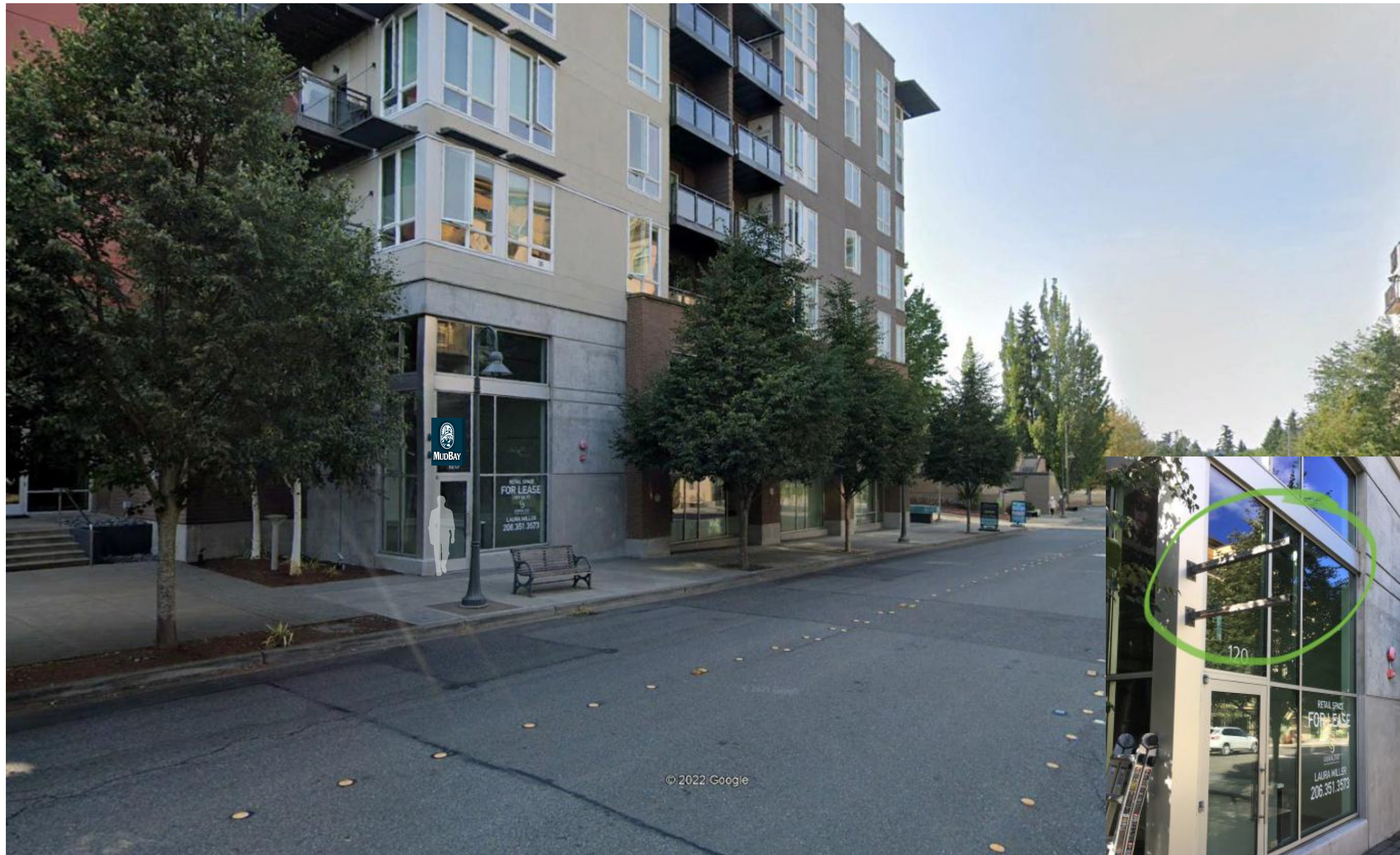
This is an original unpublished drawing, created by National Sign Corporation. It is not to be shown to anyone outside your organization, or to be used, reproduced, copied or exhibited in any fashion. Any usage beyond that granted to buyer herein shall require the separate payment of a design and engineering fee to National Sign Corporation.

 SIGN(S) TO BE MANUFACTURED TO U.L. SPECIFICATIONS AND WILL BEAR THE U.L. LABEL(S). INSTALL IN ACCORDANCE WITH NATIONAL ELECTRICAL CODES.

SCALE: As Noted

DESIGN NUMBER:
22-010 V4

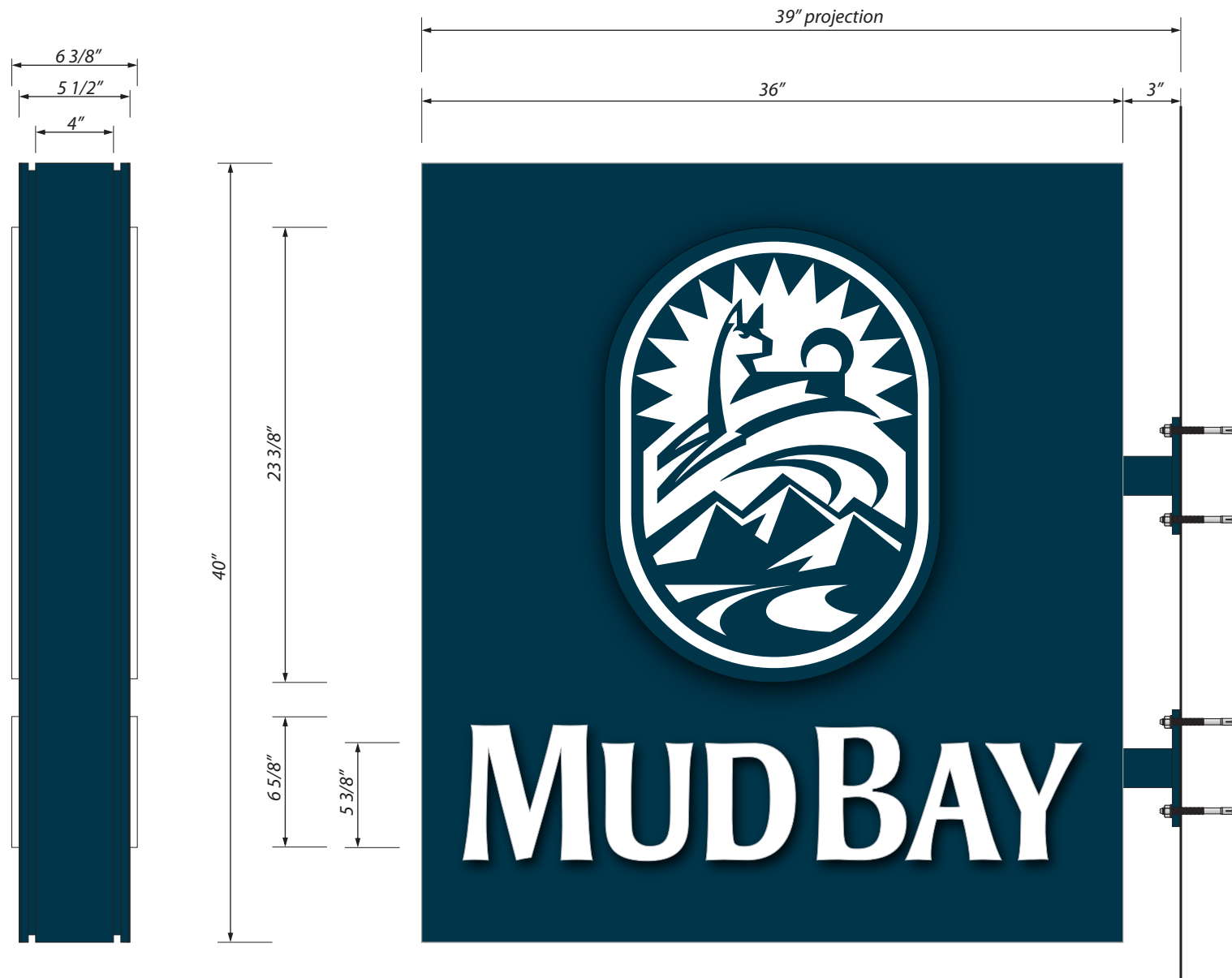
JOB NUMBER:
XX



New Conditions
Scale: NTS



Existing Conditions
Scale: NTS

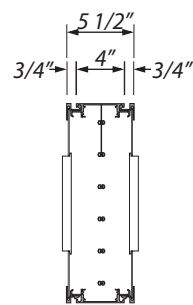


1 Front View- Detail
Scale: 1 1/2"=1'-0"

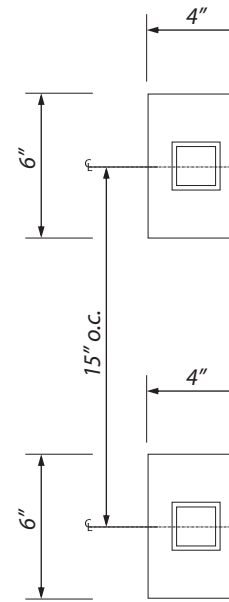
Sign 2:
Manufacture and Install (1) Exterior double faced illuminated routed with push thru logo and lettering projecting blade sign.

- A** Existing 2" steel square tube supports and flat plate steel brackets. Paint Blue PMS 303C (gloss finish).
- B** Sign body to be extruded aluminum painted Blue PMS 303C (gloss finish).
- C** Logo to be routed out of aluminum sign face with step routed 3/4" pushed through acrylic- clear, natural frosted edges, diffused back with first surface applied translucent full color digital print with gloss laminate.
- D** Lettering to be routed out of aluminum sign face with step routed 3/4" pushed through acrylic- clear, natural frosted edges, diffused back with first surface applied opaque 3M Scotchcal vinyl-white opaque block-out film.
- E** Halo illumination to be White Agile Pro 160's LED's- 6500k. Power to sign by others.

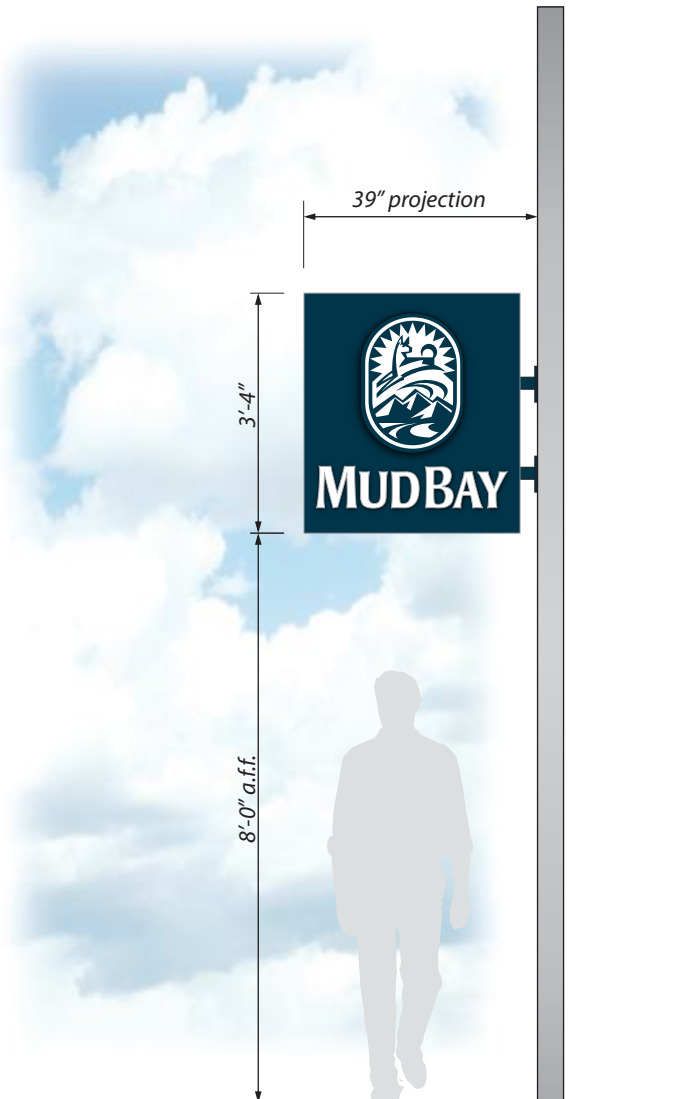
2 End View
Scale: 1 1/2"=1'-0"



Typical Section- Detail
Scale: 3/4"=1'-0"
Body: HFS-4
Retainers: HM-1 & HMF-1



3 Night View
Scale: NTS



3 Column Elevation View
Scale: 3/8"=1'-0"



NATIONAL SIGN CORPORATION
1541 S. 92nd Place, #B, Seattle, WA 98108
P. 206.282.0700
www.nationalsigncorp.com

CLIENT INFORMATION:
MudBay Mercer Island
2441 76th Ave. SE., #100
Mercer Island, WA 98040

REPRESENTATIVE:
Steve Zamberlin

DESIGNER:
Mark Mahan

DATE:
02/16/22

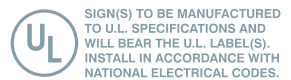
REVISION:

1	
2	
3	
4	
5	
6	
7	
8	
9	

REVIEWED BY:

F	
C	
S	
P	

This is an original unpublished drawing, created by National Sign Corporation. It is not to be shown to anyone outside your organization, or to be used, reproduced, copied or exhibited in any fashion. Any usage beyond that granted to buyer herein shall require the separate payment of a design and engineering fee to National Sign Corporation.



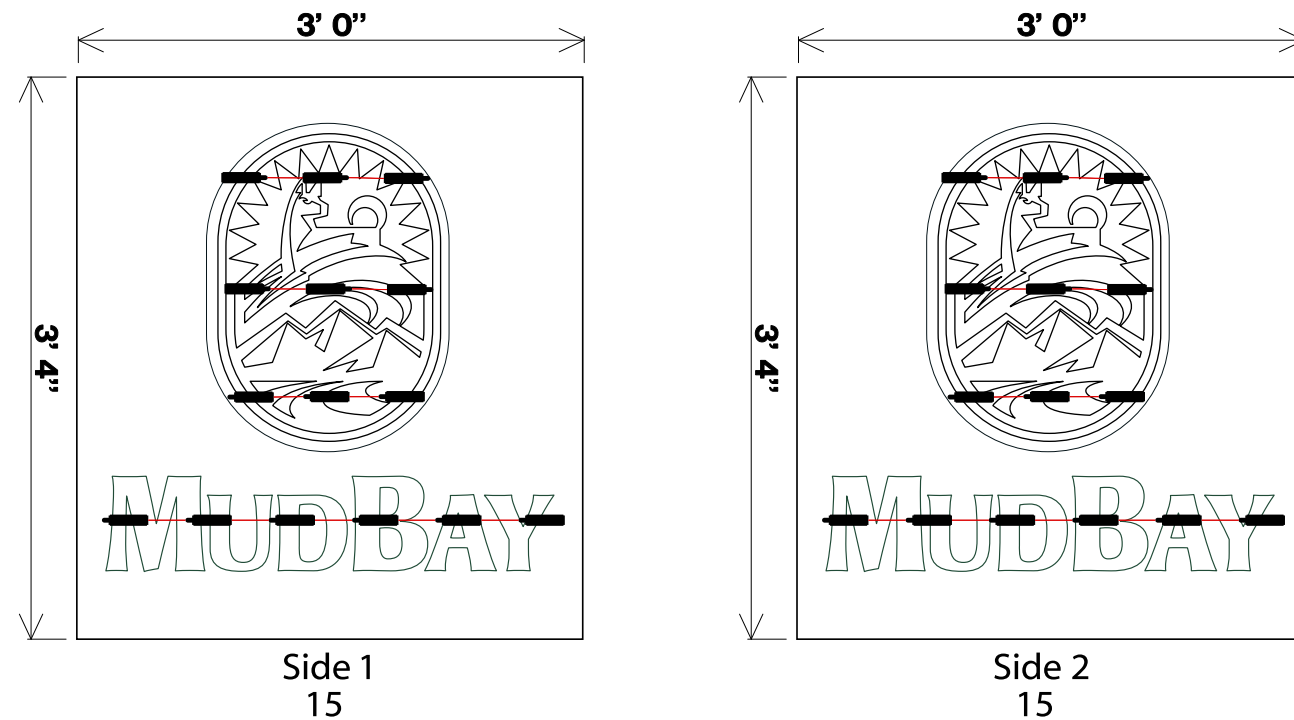
SCALE: As Noted

DESIGN NUMBER:
22-010 V4

JOB NUMBER:
XX



PRO 160 2B1C



ELECTRICAL INFORMATION:
TOTAL ELECTRICAL LOAD=0.07amps
 (1) Dedicated 20amp x 277volt x 60hz circuit
 Circuit to be provided by customer.

40" X 36" MudBay Cabinet

Date 07 February 2022	Can Depth 3.18"(6.37" Total Depth)	Modules per Foot 2	Total System Watts 27.53W
Email Layouts@genledbrands.com	Power Supply (1) PS12-60WSL-100-277V	Modules spacing 6"	Total LED Watts 23.40W
Module (30) LS-PRO160-65K-2B1C	Power Supply Location Remote	Row Spacing 7.8"	Illumination Push Thru

- 1) **UNLESS OTHERWISE SPECIFIED:** All layouts are for a single face sign or a single set of letters and the depth of the application considered for the layout is 5 inches.
- 2) LED module placement is approximate. AgiLight® recommends the sign manufacturer verify the LED placement and quantity to ensure even illumination and brightness expectations are achieved.
- 3) Estimations are based off the quality of art work and information provided by the customer, this includes: font style, letter height, depth, face material, and any special instructions. Missing information may cause delays in the delivery of estimates, as well as effect product selection, accurate quantities, and brightness.
- 4) For installation instructions of AgiLight® LED systems please refer to www.AgiLight.com under the RESOURCES section or contact an AgiLight® Inside Sales Representative at: +1.866.482.0203



CLIENT INFORMATION:
MudBay Mercer Island
 2441 76th Ave. SE., #100
 Mercer Island, WA 98040

REPRESENTATIVE:
 Steve Zamberlin

DESIGNER:
 Mark Mahan

DATE:
 02/16/22

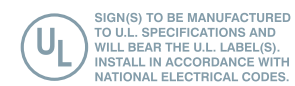
REVISION:

1	
2	
3	
4	
5	
6	
7	
8	
9	

REVIEWED BY:

F	
C	
S	
P	

This is an original unpublished drawing, created by National Sign Corporation. It is not to be shown to anyone outside your organization, or to be used, reproduced, copied or exhibited in any fashion. Any usage beyond that granted to buyer herein shall require the separate payment of a design and engineering fee to National Sign Corporation.



SCALE: As Noted

DESIGN NUMBER:
 22-010 V4

JOB NUMBER:
 XX



Existing Conditions
Scale: NTS



New Conditions
Scale: NTS



NATIONAL SIGN
CORPORATION

1541 S. 92nd Place, #B, Seattle, WA 98108
P. 206.282.0700
www.nationalsigncorp.com

CLIENT INFORMATION:

MudBay Mercer Island
2441 76th Ave. SE., #100
Mercer Island, WA 98040

REPRESENTATIVE:

Steve Zamberlin

DESIGNER:

Mark Mahan

DATE:

02/16/22

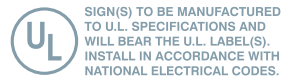
REVISION:

1	
2	
3	
4	
5	
6	
7	
8	
9	

REVIEWED BY:

F	
C	
S	
P	

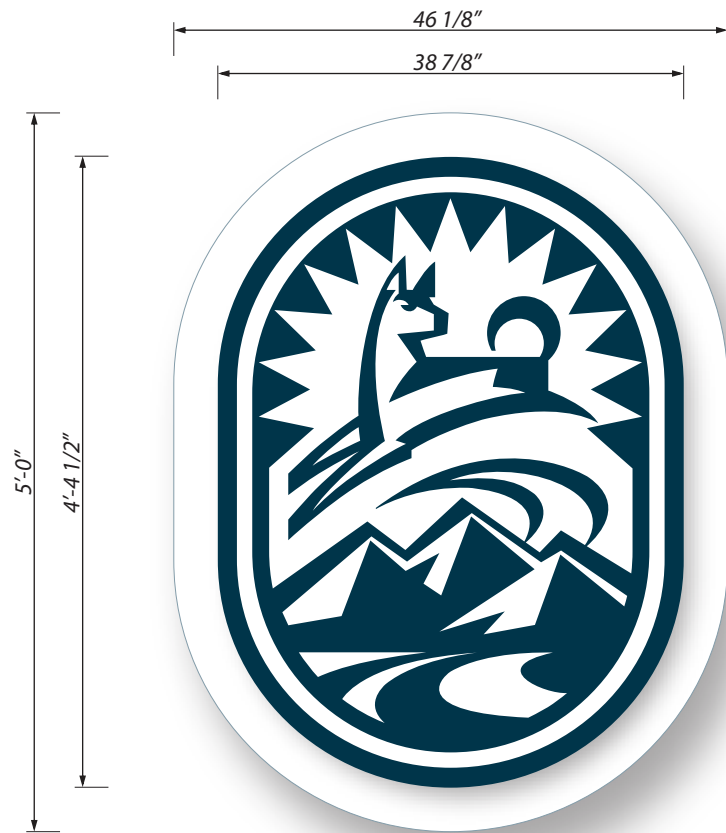
This is an original unpublished drawing, created by National Sign Corporation. It is not to be shown to anyone outside your organization, or to be used, reproduced, copied or exhibited in any fashion. Any usage beyond that granted to buyer herein shall require the separate payment of a design and engineering fee to National Sign Corporation.



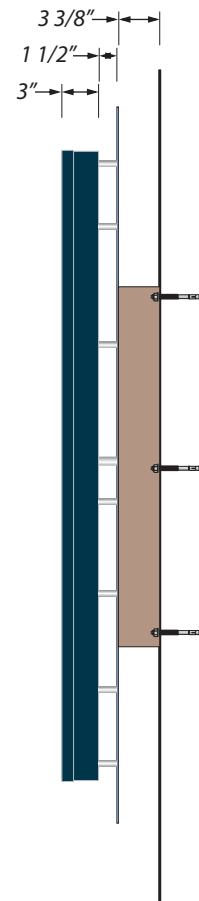
SCALE: As Noted

DESIGN NUMBER:
22-010 V4

JOB NUMBER:
XX



1 Front View- Detail
Scale: 3/4"=1'-0"



2 Side View
Scale: 3/4"=1'-0"



3 Night View
Scale: NTS



4 Column Elevation View
Scale: 3/8"=1'-0"

Sign 3:

Manufacture and Install (1) Exterior single faced illuminated front lit halo lit logo pan channel construction logo sign.

- A** Logo to be Front lit halo lit reverse pan channel letter construction.
- B** Returns and fabricated retainer to be painted Navy Blue to match PMS 303c (gloss finish).
- C** Face to be translucent acrylic- White with first surface applied full color digital vinyl graphic.
- D** Letter back to be 3/8" polycarbonate- Clear with diffuser.
- E** Face lit and Halo illumination to be White Agilite Pro 160's LED's- 6500k.
- F** Pin lettering off aluminum background 1 1/2" with all thread and pipe sleeves painted White (satin finish).
- G** Halo splash background to be .125" aluminum painted White (satin finish).
- H** Pin lettering off aluminum background 1 1/2" with all thread and pipe sleeves painted White (satin finish).
- I** Mount aluminum raceway painted to match wall color, flush to wall with 3/8" expansion bolts.
- J** Power to sign by others 120volt circuit req.
- K** Seal all wall penetrations with heavy duty all weather silicone- clear.



1541 S. 92nd Place, #B, Seattle, WA 98108
P. 206.282.0700
www.nationalsigncorp.com

CLIENT INFORMATION:
MudBay Mercer Island
2441 76th Ave. SE., #100
Mercer Island, WA 98040

REPRESENTATIVE:
Steve Zamberlin

DESIGNER:
Mark Mahan

DATE:
02/16/22

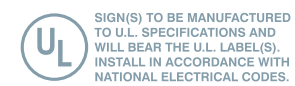
REVISION:

1	
2	
3	
4	
5	
6	
7	
8	
9	

REVIEWED BY:

F	
C	
S	
P	

This is an original unpublished drawing, created by National Sign Corporation. It is not to be shown to anyone outside your organization, or to be used, reproduced, copied or exhibited in any fashion. Any usage beyond that granted to buyer herein shall require the separate payment of a design and engineering fee to National Sign Corporation.



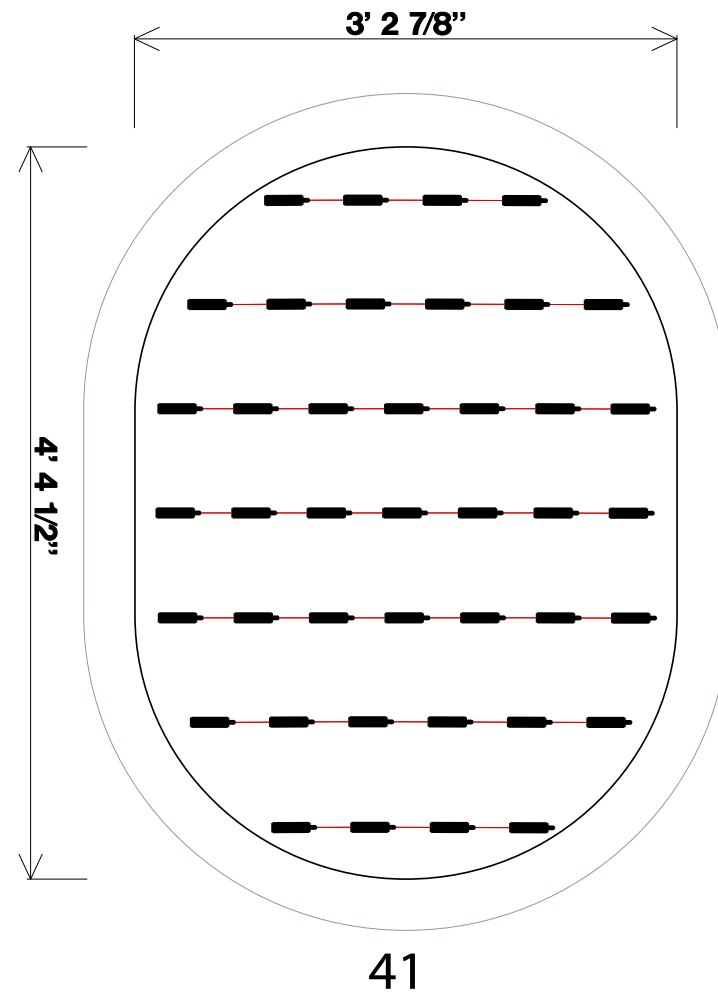
SCALE: As Noted

DESIGN NUMBER:
22-010 V4

JOB NUMBER:
XX



PRO 160 2B1C



ELECTRICAL INFORMATION:
TOTAL ELECTRICAL LOAD=0.07amps
 (1) Dedicated 20amp x 277volt x 60hz circuit
 Circuit to be provided by customer.

52.5" X 38.87" MudBay Cabinet

Date 07 February 2022	Can Depth 3"	Modules per Foot 2	Total System Watts 37.62W
Email Layouts@genledbrands.com	Power Supply (1) PS12-60WSL-100-277V	Modules spacing 6"	Total LED Watts 31.98W
Module (41) LS-PRO160-65K-2B1C	Power Supply Location Remote	Row Spacing 7.5"	Illumination Face & Halo Lit

- 1) **UNLESS OTHERWISE SPECIFIED:** All layouts are for a single face sign or a single set of letters and the depth of the application considered for the layout is 5 inches.
- 2) LED module placement is approximate. AgiLight® recommends the sign manufacturer verify the LED placement and quantity to ensure even illumination and brightness expectations are achieved.
- 3) Estimations are based off the quality of art work and information provided by the customer, this includes: font style, letter height, depth, face material, and any special instructions. Missing information may cause delays in the delivery of estimates, as well as effect product selection, accurate quantities, and brightness.
- 4) For installation instructions of AgiLight® LED systems please refer to www.AgiLight.com under the RESOURCES section or contact an AgiLight® Inside Sales Representative at: +1.866.482.0203



CLIENT INFORMATION:
MudBay Mercer Island
 2441 76th Ave. SE., #100
 Mercer Island, WA 98040

REPRESENTATIVE:
 Steve Zamberlin

DESIGNER:
 Mark Mahan

DATE:
 02/16/22

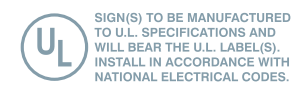
REVISION:

1	
2	
3	
4	
5	
6	
7	
8	
9	

REVIEWED BY:

F	
C	
S	
P	

This is an original unpublished drawing, created by National Sign Corporation. It is not to be shown to anyone outside your organization, or to be used, reproduced, copied or exhibited in any fashion. Any usage beyond that granted to buyer herein shall require the separate payment of a design and engineering fee to National Sign Corporation.



SCALE: As Noted

DESIGN NUMBER:
 22-010 V4

JOB NUMBER:
 XX

MUDBAY SITE PLAN



NATIONAL SIGN CORPORATION

1541 S. 92nd Place, #B, Seattle, WA 98108
P. 206-282-0700
www.nationalsigncorp.com

CLIENT INFORMATION:

MudBay Mercer Island
2441 76th Ave. SE., #100
Mercer Island, WA 98040

REPRESENTATIVE:

Steve Zamberlin

DESIGNER:

Mark Mahan

DATE:

02/16/22

REVISION:

- 1
- 2
- 3
- 4
- 5
- 6
- 7
- 8
- 9

REVIEWED BY:

F
C
S
P

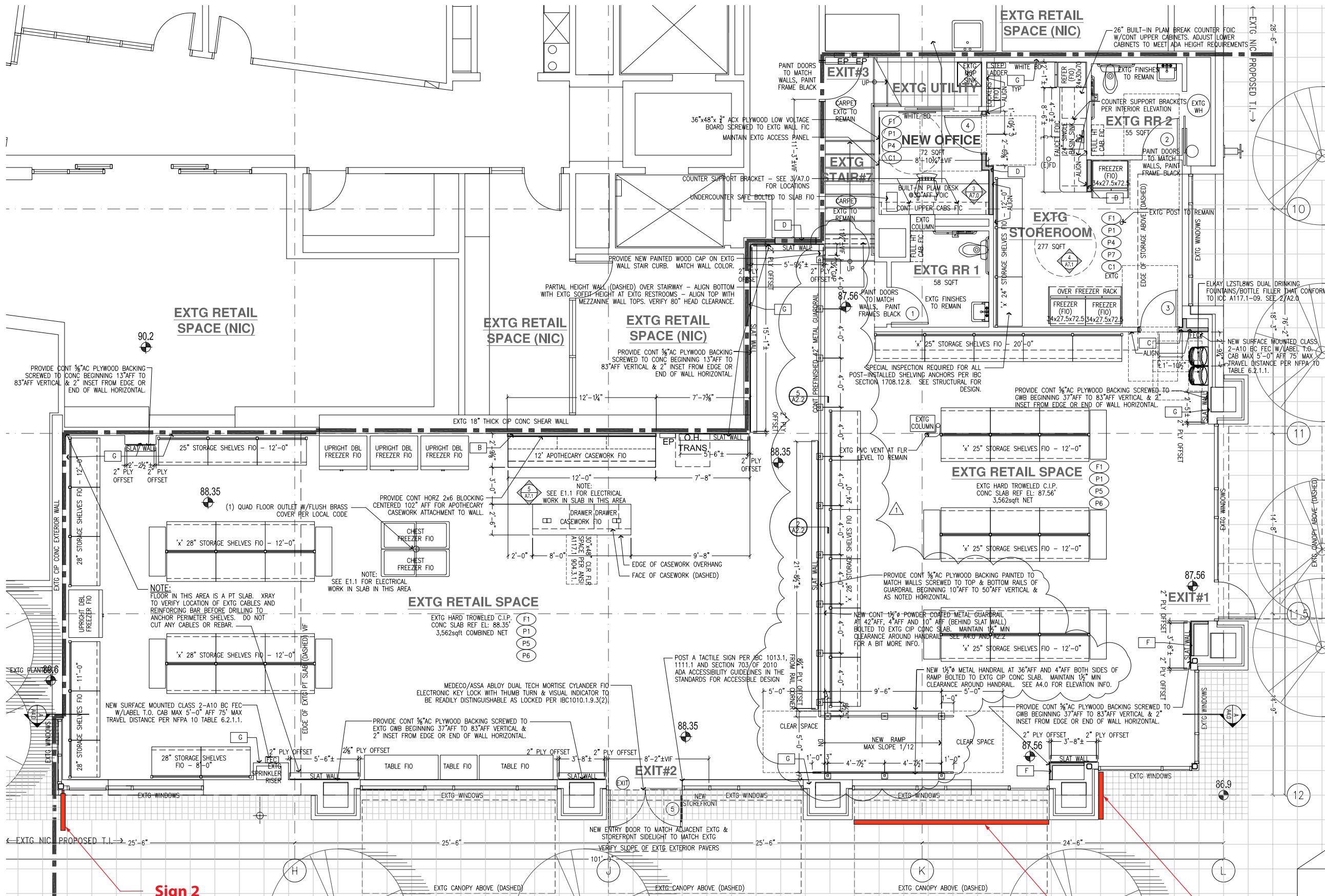
This is an original unpublished drawing, created by National Sign Corporation. It is not to be shown to anyone outside your organization, or to be used, reproduced, copied or exhibited in any fashion. Any usage beyond that granted to buyer herein shall require the separate payment of a design and engineering fee to National Sign Corporation.

UL SIGN(S) TO BE MANUFACTURED TO U.L. SPECIFICATIONS AND WILL BEAR THE U.L. LABEL(S). INSTALL IN ACCORDANCE WITH NATIONAL ELECTRICAL CODES.

SCALE: As Noted

DESIGN NUMBER:
22-010 V4

JOB NUMBER:
XX



1 Front View- Detail
Scale: 1/8"=1'-0"

MUDBAY SITE PLAN



Vicinity Map
Scale: NTS



Aerial View
Scale: NTS



NATIONAL SIGN
CORPORATION

1541 S. 92nd Place, #B, Seattle, WA 98108
P. 206-282-0700
www.nationalsigncorp.com

CLIENT INFORMATION:

MudBay Mercer Island
2441 76th Ave. SE., #100
Mercer Island, WA 98040

REPRESENTATIVE:

Steve Zamberlin

DESIGNER:

Mark Mahan

DATE:

02/16/22

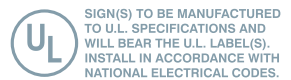
REVISION:

1	
2	
3	
4	
5	
6	
7	
8	
9	

REVIEWED BY:

F	
C	
S	
P	

This is an original unpublished drawing, created by National Sign Corporation. It is not to be shown to anyone outside your organization, or to be used, reproduced, copied or exhibited in any fashion. Any usage beyond that granted to buyer herein shall require the separate payment of a design and engineering fee to National Sign Corporation.



SCALE: As Noted

DESIGN NUMBER:
22-010 V4

JOB NUMBER:
XX



NATIONAL SIGN
CORPORATION

1541 S. 92nd Place, #B, Seattle, WA 98108
P. 206.282.0700
www.nationalsigncorp.com

CLIENT INFORMATION:

MudBay Mercer Island
2441 76th Ave. SE., #100
Mercer Island, WA 98040

REPRESENTATIVE:

Steve Zamberlin

DESIGNER:

Mark Mahan

DATE:

02/16/22


REVISION:

1	
2	
3	
4	
5	
6	
7	
8	
9	

REVIEWED BY:

F	
C	
S	
P	

This is an original unpublished drawing, created by National Sign Corporation. It is not to be shown to anyone outside your organization, or to be used, reproduced, copied or exhibited in any fashion. Any usage beyond that granted to buyer herein shall require the separate payment of a design and engineering fee to National Sign Corporation.

 SIGN(S) TO BE MANUFACTURED TO U.L. SPECIFICATIONS AND WILL BEAR THE U.L. LABEL(S). INSTALL IN ACCORDANCE WITH NATIONAL ELECTRICAL CODES.

SCALE: As Noted

DESIGN NUMBER:
22-010 V4

JOB NUMBER:
XX

